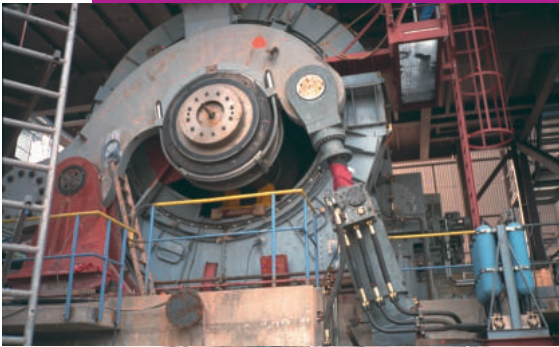


“We were impressed by the versatility of the FCB Horomill®, which perfectly matched our multi-product portfolio with our sales requirements. The FCB Horomill® has fulfilled this objective since its installation.”

**Stefan Fiedler, Investment Director,
thomas zement GmbH**



SUCCESS STORY
LAFARGE ZEMENT
Karsdorf plant • Karsdorf, Germany



Challenge: Lafarge Zement (now thomas zement GmbH) needed a grinding plant that could produce seven different products, including pure limestone, pure slag, Ordinary Portland Cement, and 70% slag cement.

Response: Fives adapted the hydraulic design of both the FCB Horomill® and the classification system to handle the raw materials' different grindabilities and the broad fineness spectrum.

Result: The Karsdorf plant has proven able to produce not only blended cements, but pure limestone meal over 8,000 cm²/g and pure slag meal over 4,500 cm²/g.

Added value: Its stable automated operation capabilities and short residence time can easily handle the seven different product recipes and switch several times daily, ensuring continuous optimized operating conditions no matter the recipe.